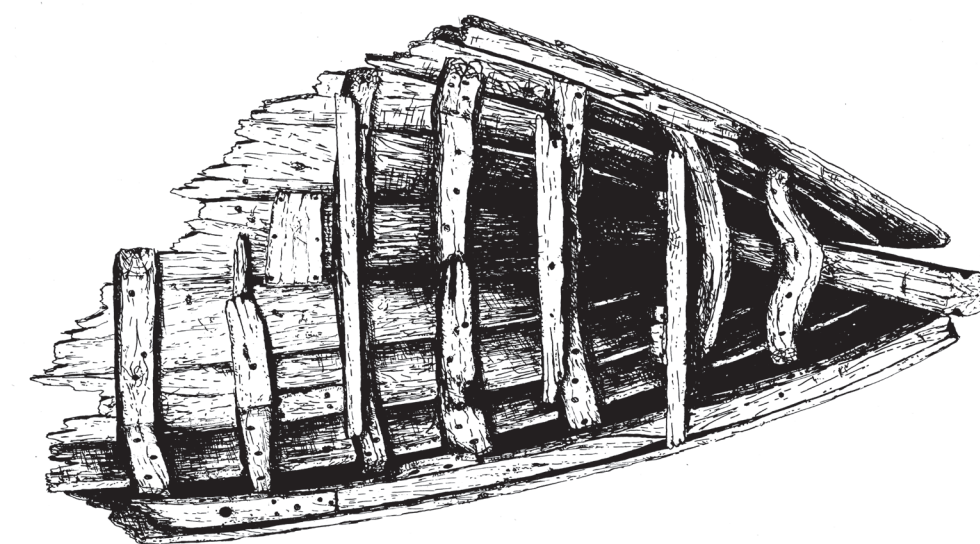
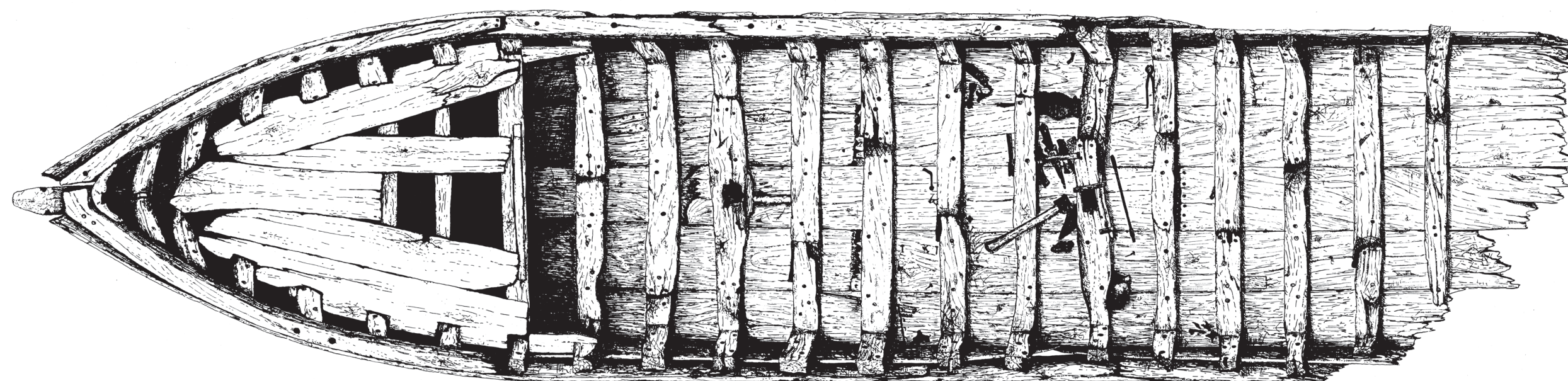


The wreck



Field drawing

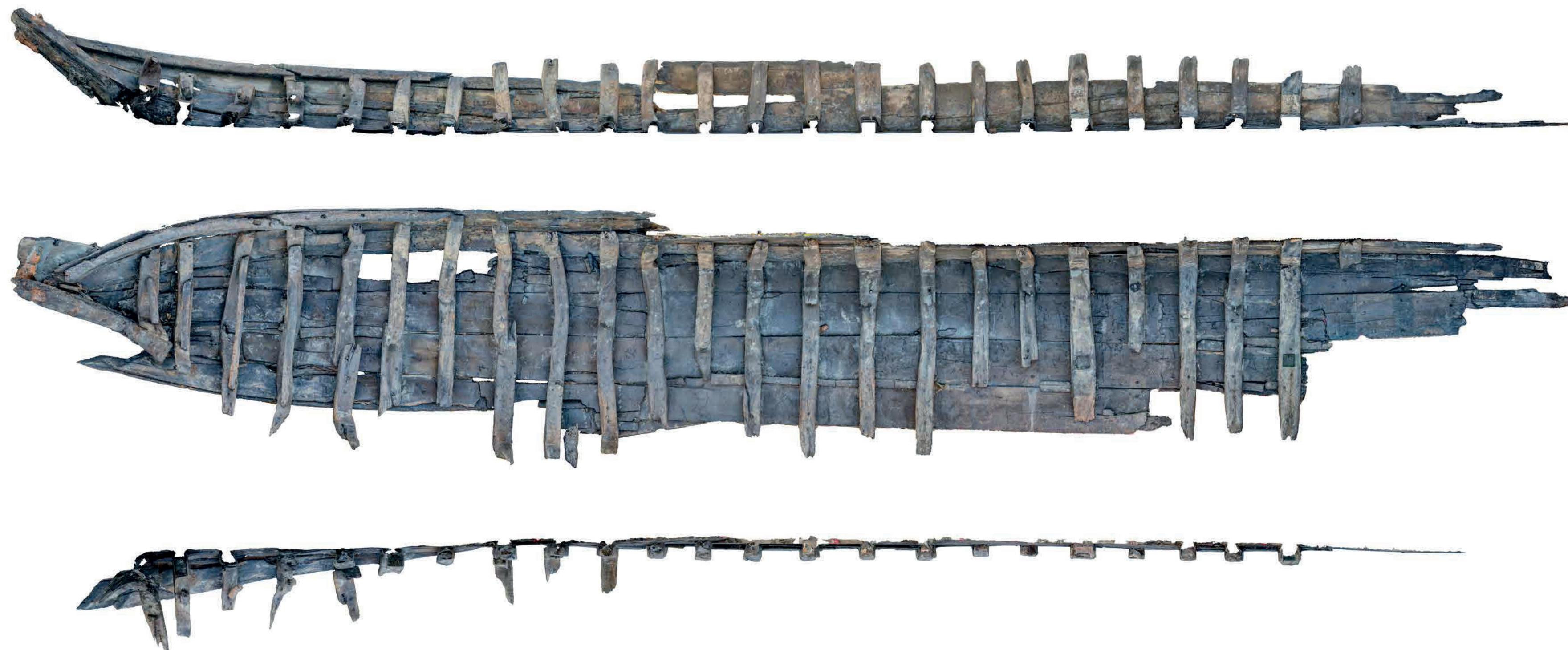
Top view, with the locations of the finds.

Scale

0 m 1 m



The wreck



Reconstruction

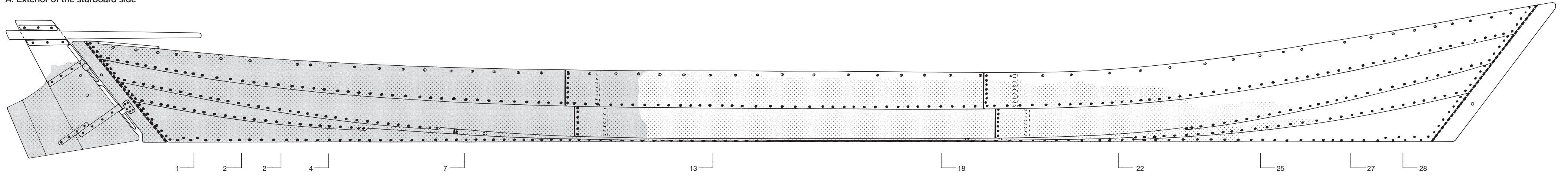
Interior of the port side; top view with part of the rudder; longitudinal section. Photogrammetric images.

Scale

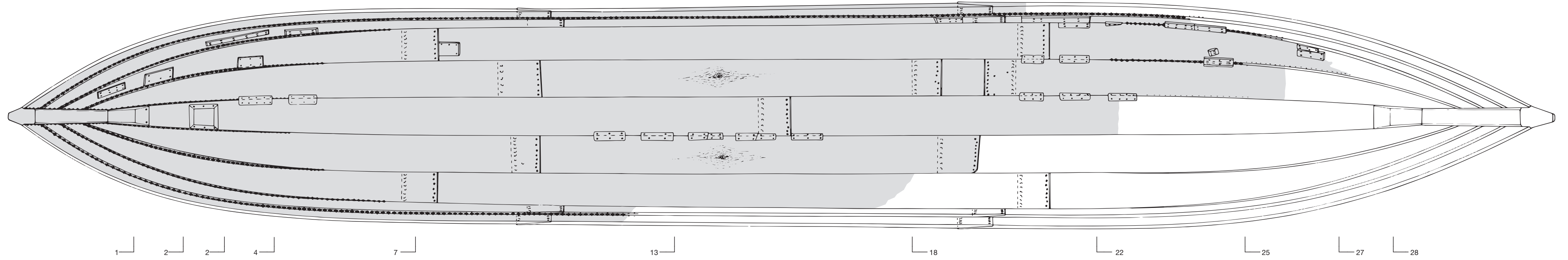
0 m 1 m



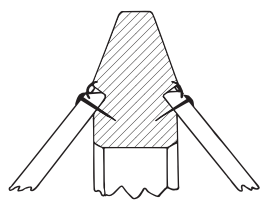
A. Exterior of the starboard side



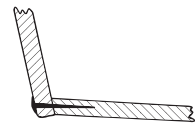
B. Top view



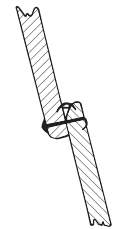
C. Fastening of the hood ends of shell strakes



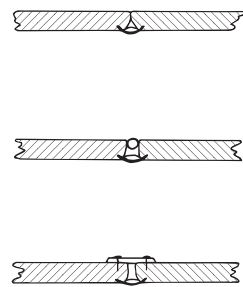
D. Fastening of the sides to the bottom



E. Clinker fastening with double-clenched nails



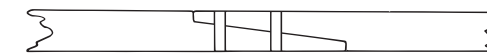
F. Bottom seams



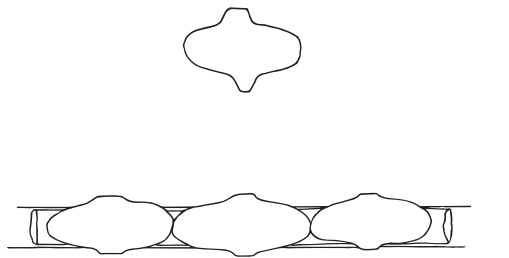
G. Lipped scarfs in the bottom



H. Lipped scarfs in the inwale



I. Sintel clamps



Legend

- Recovered timbers of the starboard side (in A); recovered timber (in B)
- Recovered timbers of the port side (in A)
- Cross-cut wood
- Frame number

Reconstruction drawings

- A. Exterior of the starboard side combining the recovered timbers of the starboard and port sides.
- B. Top view showing the scarfs in the strakes, repairs, the seams closed with clamped moss caulking, and the matching grain and knots in the starboard and port garboard strakes (brother-and-sister pattern).

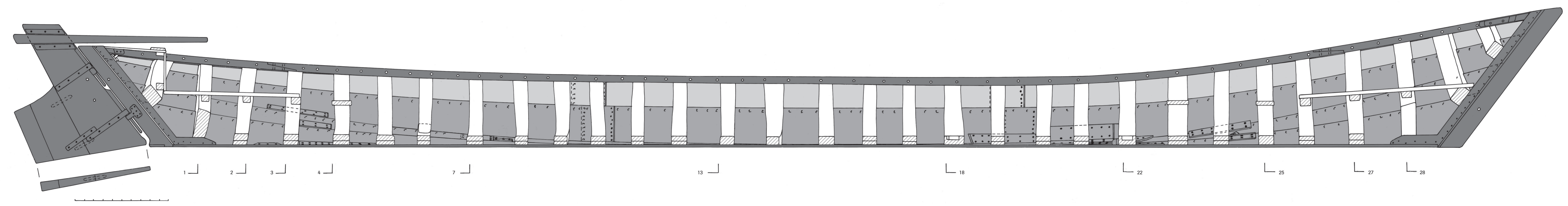
Detail drawings

- C. Fastening of the hood ends of shell strakes to the stern.
- D. Fastening of the sides to the bottom.
- E. Clinker fastening of the planking of the sides.
- F. Bottom seams between (shrunken) planks, and methods for sealing them. Clamped moss caulking, clamped moss caulking with a (split) withy, clamped moss caulking with laths nailed over the wide seams.
- G. Shape and fastening of the lipped scarfs in the bottom.
- H. Shape and fastening of the lipped scarfs in the inwale.
- I. Sintel clamp (type E) and how the clamped moss caulking was applied.

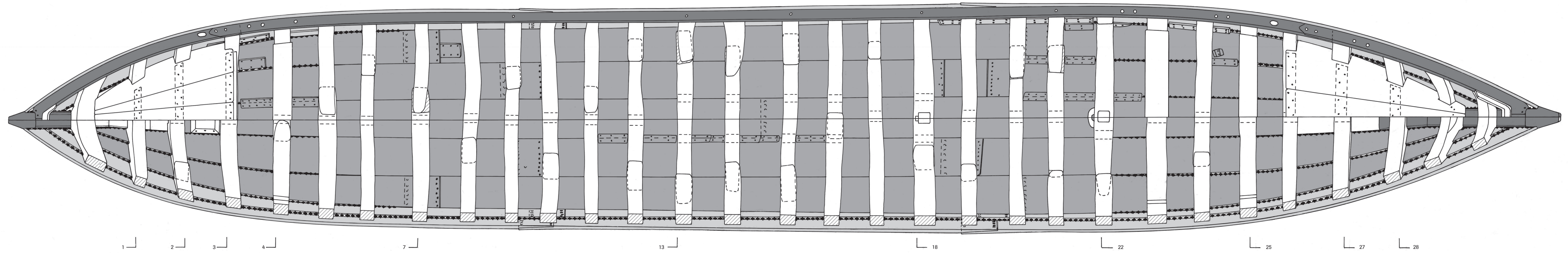
Scale



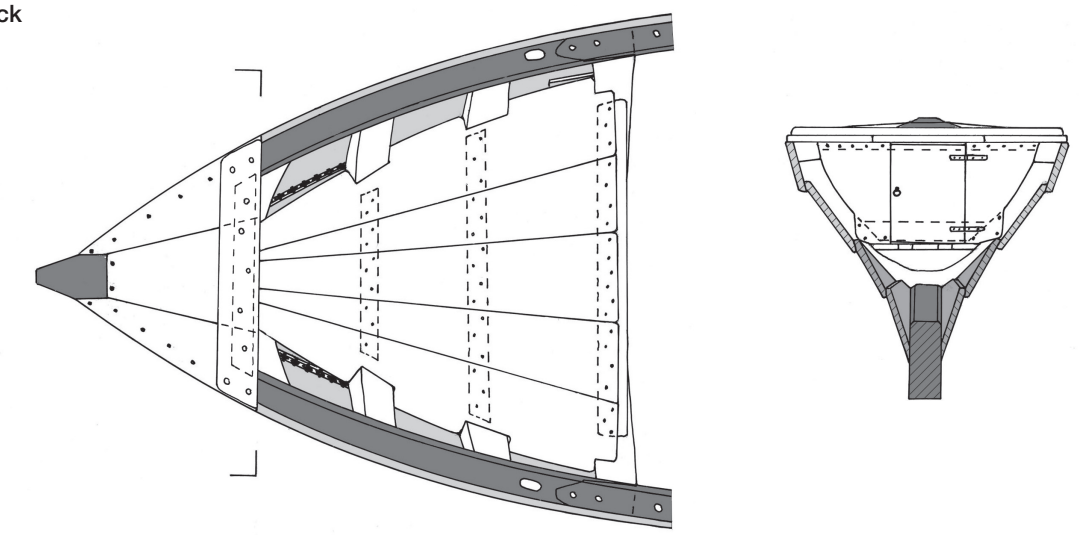
A. Interior of the starboard side



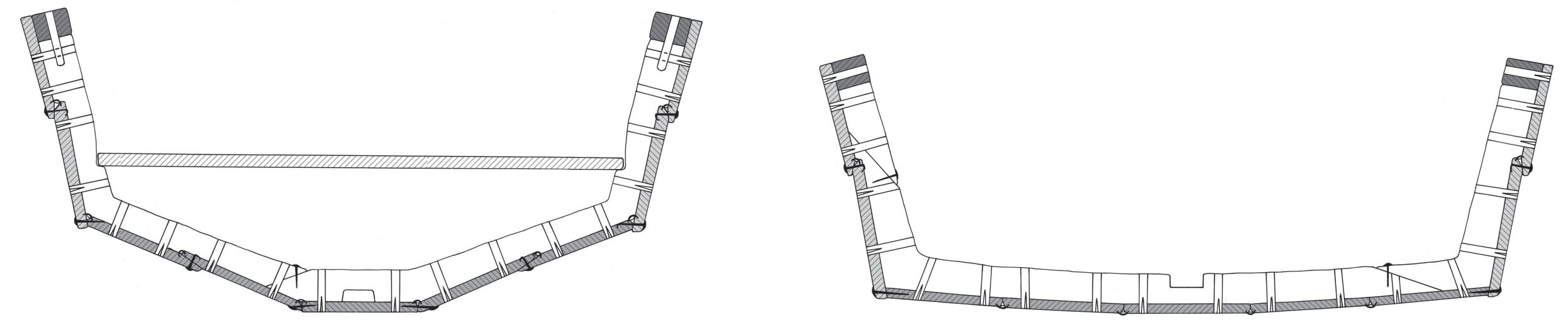
B. Top view



C. Small afterdeck



D. Cross-sections (scale 1:60)



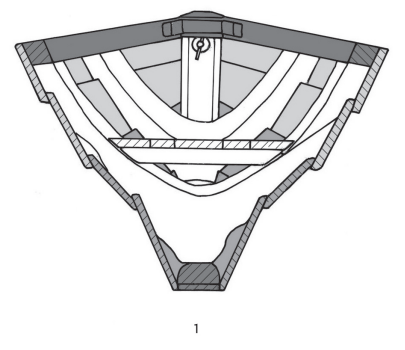
- Legend**
- Inwale, stern and stem
  - Bottom planking
  - Side planking
  - Frames
  - Cross-cut wood
  - Frame number

- Reconstruction drawings**
- A. Interior of the port side with rudder.
  - B. Top view with cuddy, inwale and frames (port); the frames and the seams with internal clamped moss caulking (starboard).
  - C. The small afterdeck at gunwale level against the stempost, the actual afterdeck, and a cross-section at the front of the small afterdeck with the hatchway.
  - D. Two cross-sections with thwart and mast step, showing the overall construction and the fastenings.

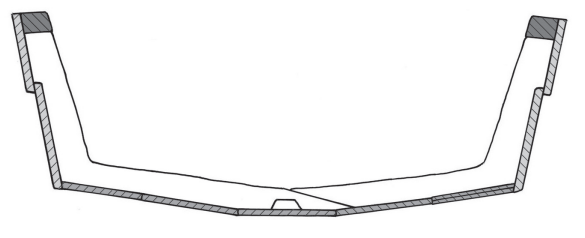
**Scale**  
0 m 1 m



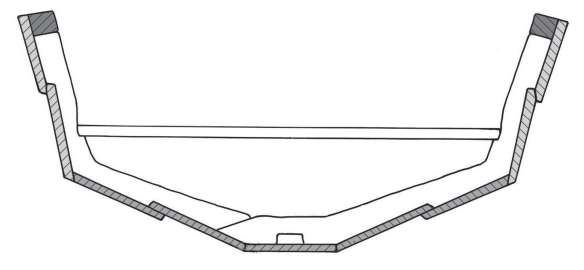
A. Cross-sections



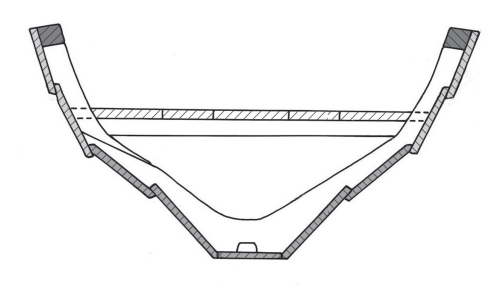
1



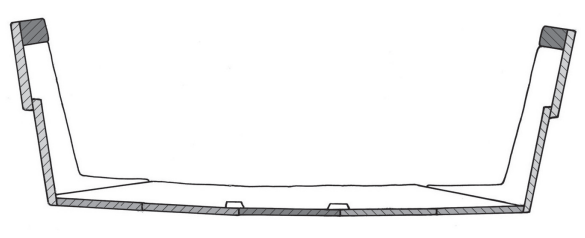
7



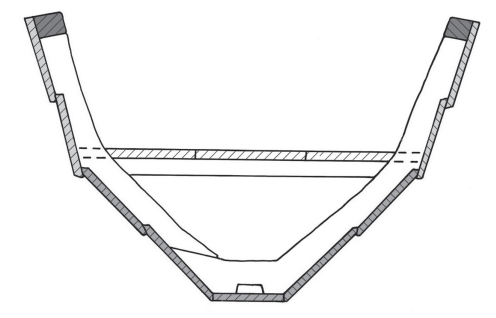
25



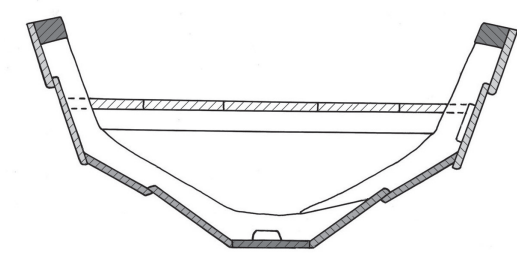
2



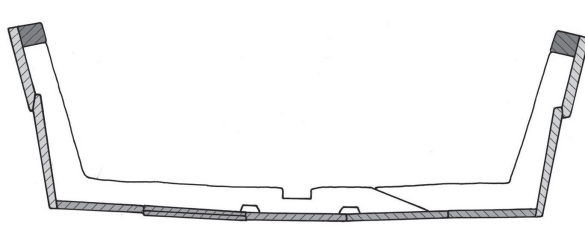
13



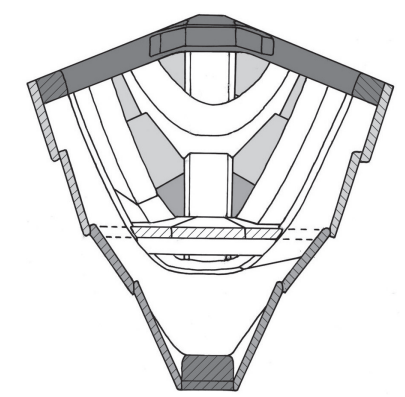
27



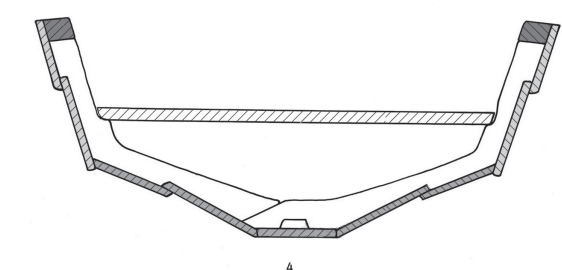
3



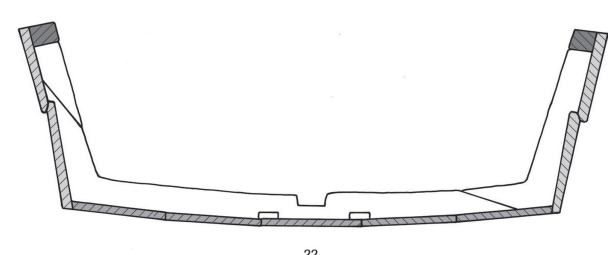
18









28



4



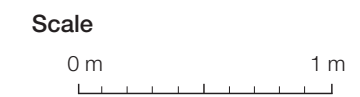
22

- Legend**
-  Inwale, stern and stem
  -  Bottom planking
  -  Side planking
  -  Frames
  -  Cross-cut wood
  -  Frame number

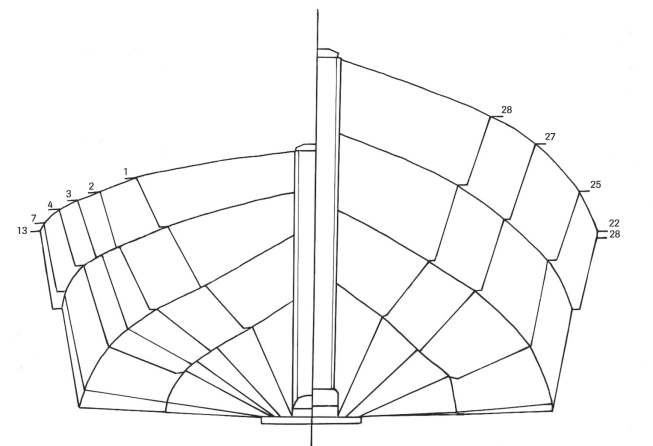
**Reconstruction drawings**

A. Cross-sections

B. Lines/planking drawing. On the left, the afterbody of the boat; on the right, the forebody.



B. Lines/planking drawing





A. The wreck



Field drawing

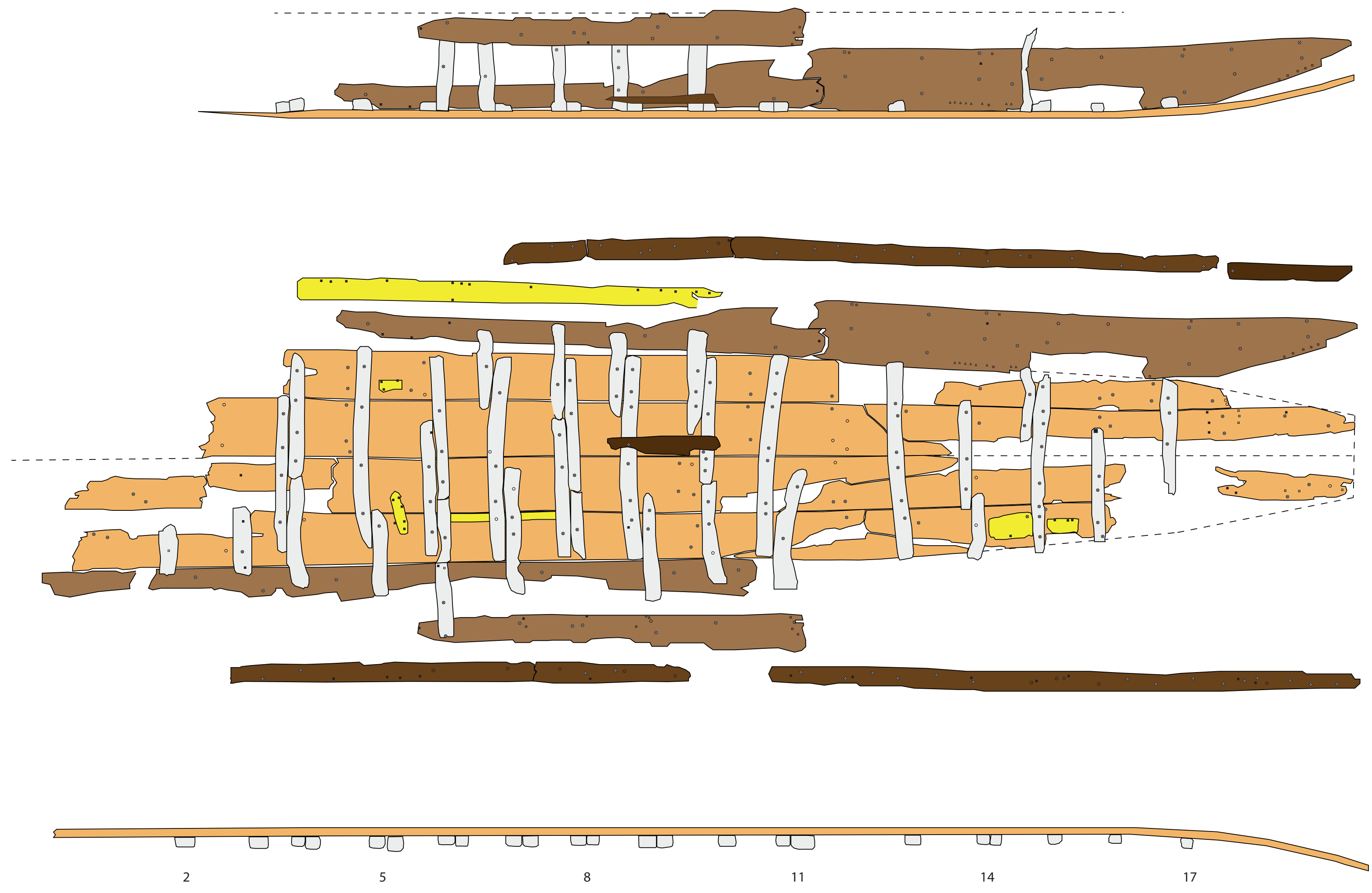
A. The wreck with splayed starboard and port sides; longitudinal section showing the upright frame parts of the starboard and port sides. Photogrammetric image.

Scale

0 m 1 m



B. The wreck



Legend

- Inwale
- Mast step
- Side strakes
- Bottom strakes
- Repair plank
- Frames
- Cross-cut wood
- 6 Frame number

Field drawings

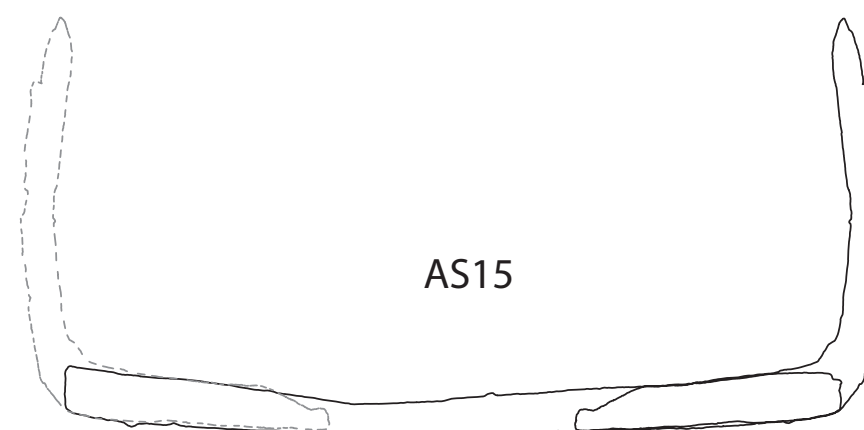
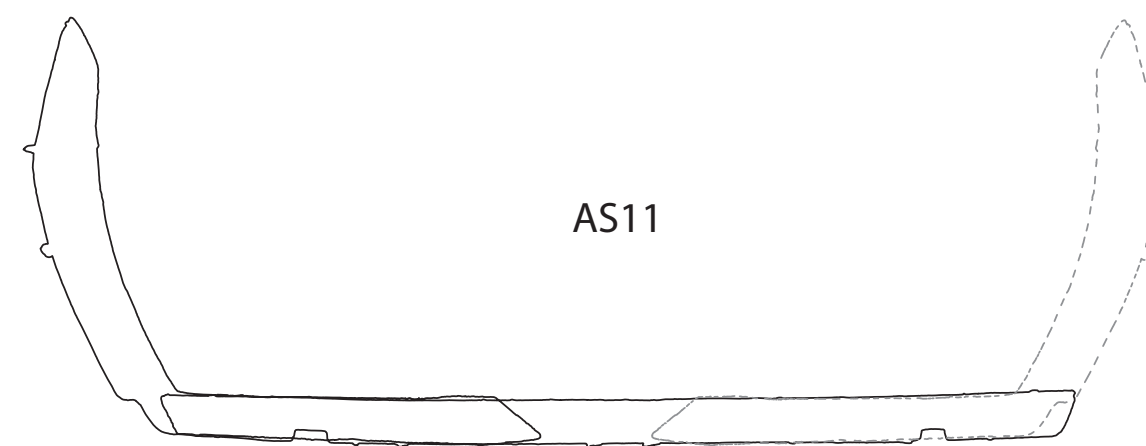
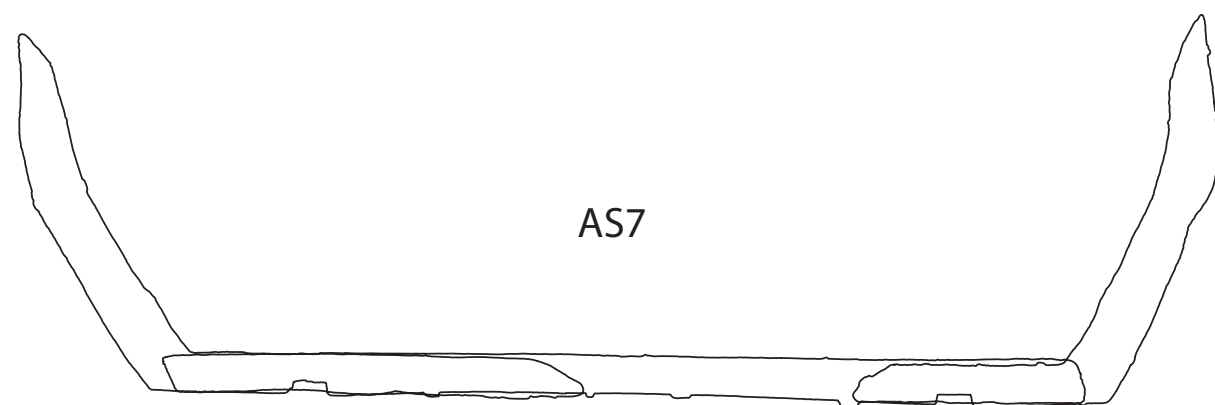
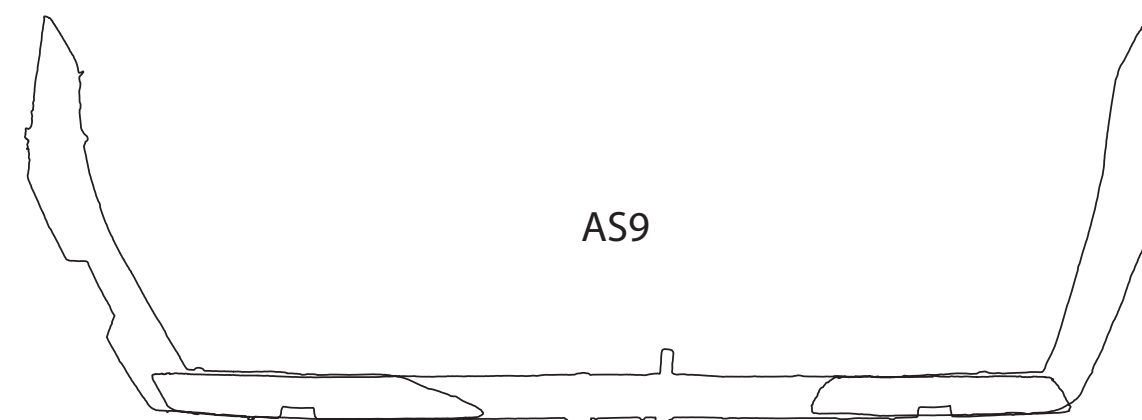
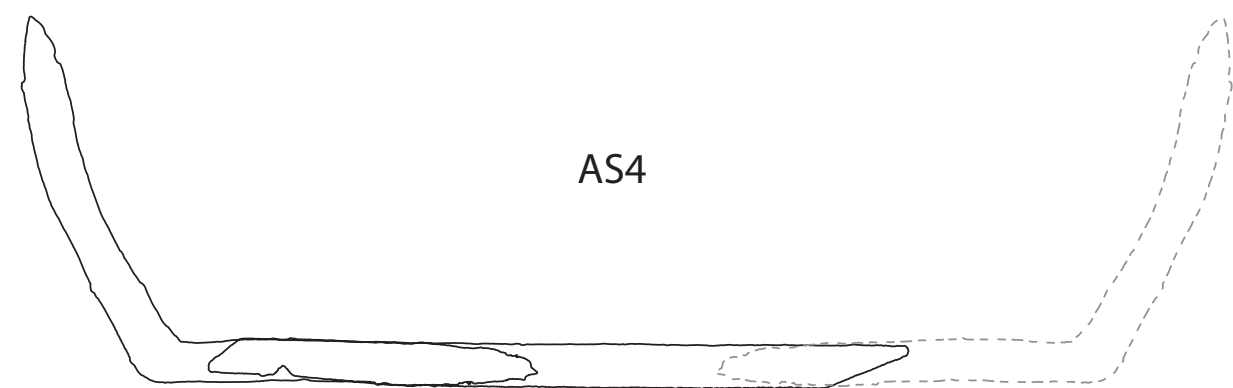
B. Interior of the port side; top view; longitudinal section.  
Photogrammetric image.

Scale





C. Cross-sections



Field drawings

C. Cross-sections at five frames. Photogrammetric images.

Scale

0 m 1 m